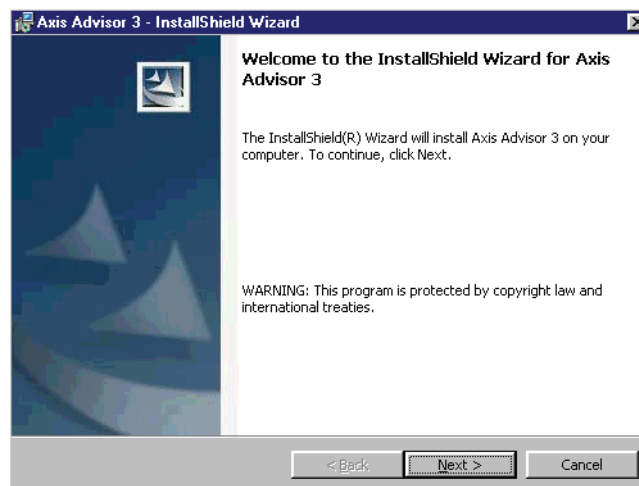


# Axis Advisor Update 3.08.0072

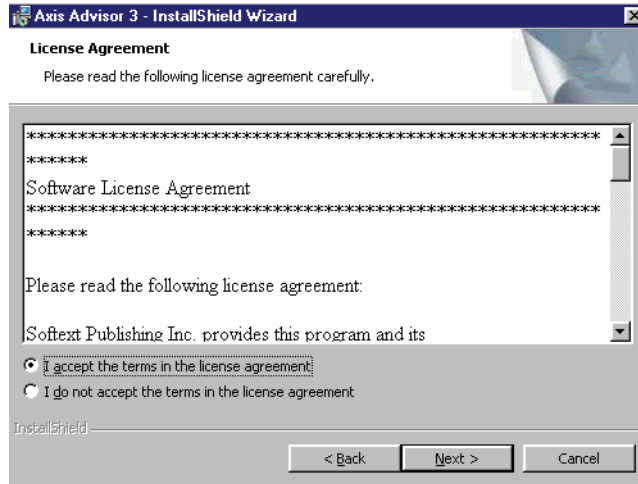
## Installation Instructions

These Installation Instructions will step you through the process of installing the update for the Axis Advisor software. Please read and follow the instructions **carefully** to ensure a successful installation of the update. This update must be installed on each computer where the Axis Advisor v3.0x program resides.

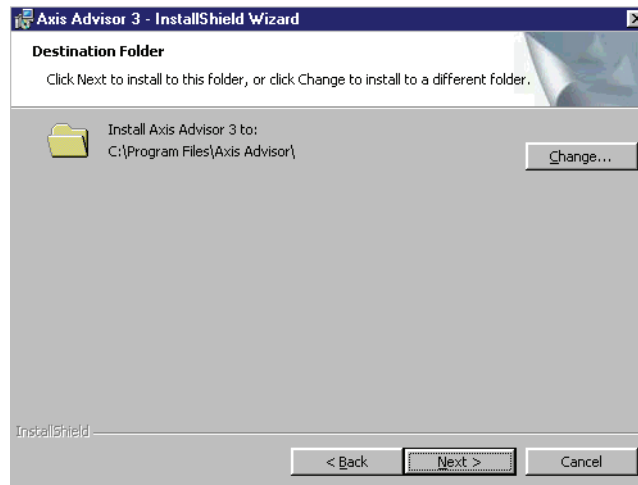
1. Download the update file, (setup.zip), from [www.softtextpublishing.com](http://www.softtextpublishing.com). You will be required to enter your username and password to gain access to the update page. Usernames and passwords are assigned by Softtext Publishing, if you do not already have a username and password, or have forgotten your codes, please contact Softtext Publishing Support at 519-371-0055.
2. Before installing the update make sure that all instances of the Axis software have been shut down.
3. Locate the file that you just downloaded, (setup.zip), and unzip the file using Winzip, to your Axis Advisor v3.0x program directory, (this is usually C:\Program Files\Axis Advisor but may be different if the original installation defaults were not followed).
4. Using Windows Explorer open your Axis Advisor v3.0x program directory and double-click on the setup.exe located there.



5. Click on Next.

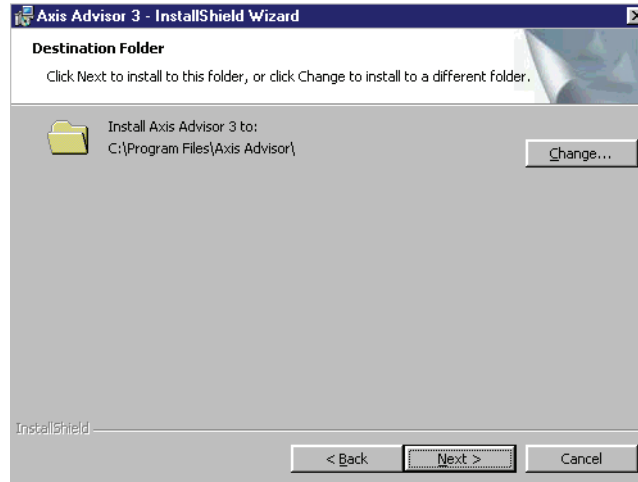


6. Check 'I accept the terms in the license agreement' and then click Next.

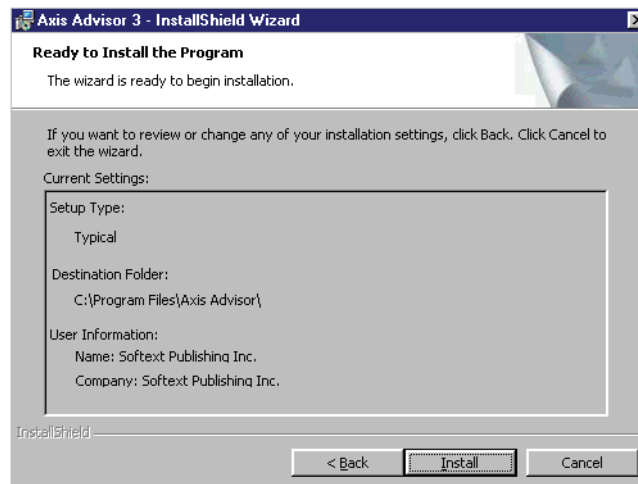


7. Confirm that the directory path matches the location of your Axis Advisor v3.0x program directory. If the program was installed using the installation defaults, the Advisor v3.0x program should be located in the C:\Program Files\Axis Advisor, if this is the directory where your Axis Advisor has been installed, click on Next and continue to step #9.

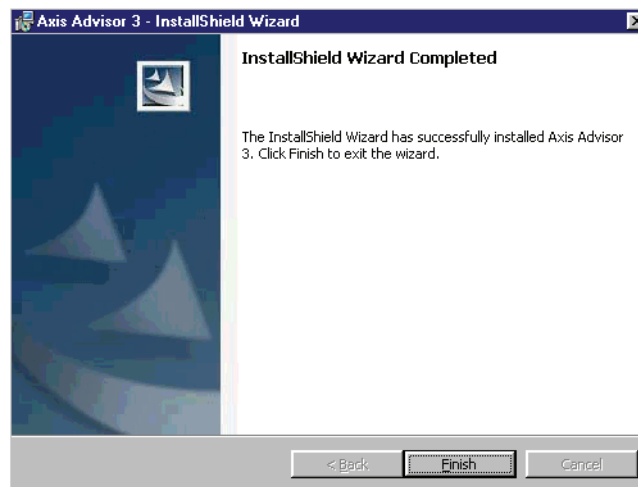
**\*\* If you did not use the installation default for the Axis Advisor software, click on Change button to locate your Axis Advisor v3.0x program directory.**



8. Click on the folder lookup button to locate your Axis Advisor v3.0x Program directory. **Be sure to direct the installation to the directory location of your Axis Advisor v3.0x program.** Click on Ok.



9. Click on Install.



10. Click on Finish.